

# A Guide for Parents

Information and frequently asked questions about joining our school



Updated April 2025



## What's in this guide?

This guide is an introduction into how we care for and educate our students. We hope you find it a useful guide. Here you will find some essential information and answers to frequently asked questions relating to your child's placement at Sheiling School.

If you have any further questions or require clarification of any kind, please do not hesitate to contact Reception on 01425 477488 so we can put you in contact with the right person. You can also find out more at [www.thesheilingringwood.co.uk](http://www.thesheilingringwood.co.uk)

## Our Mission

To create an educational, therapeutic community and environment, which upholds each person's human integrity and spiritual wholeness and where every child and young person, both because of and despite their individual challenges, has something to give and something to learn through all of their relationships with others.

# Contents

---

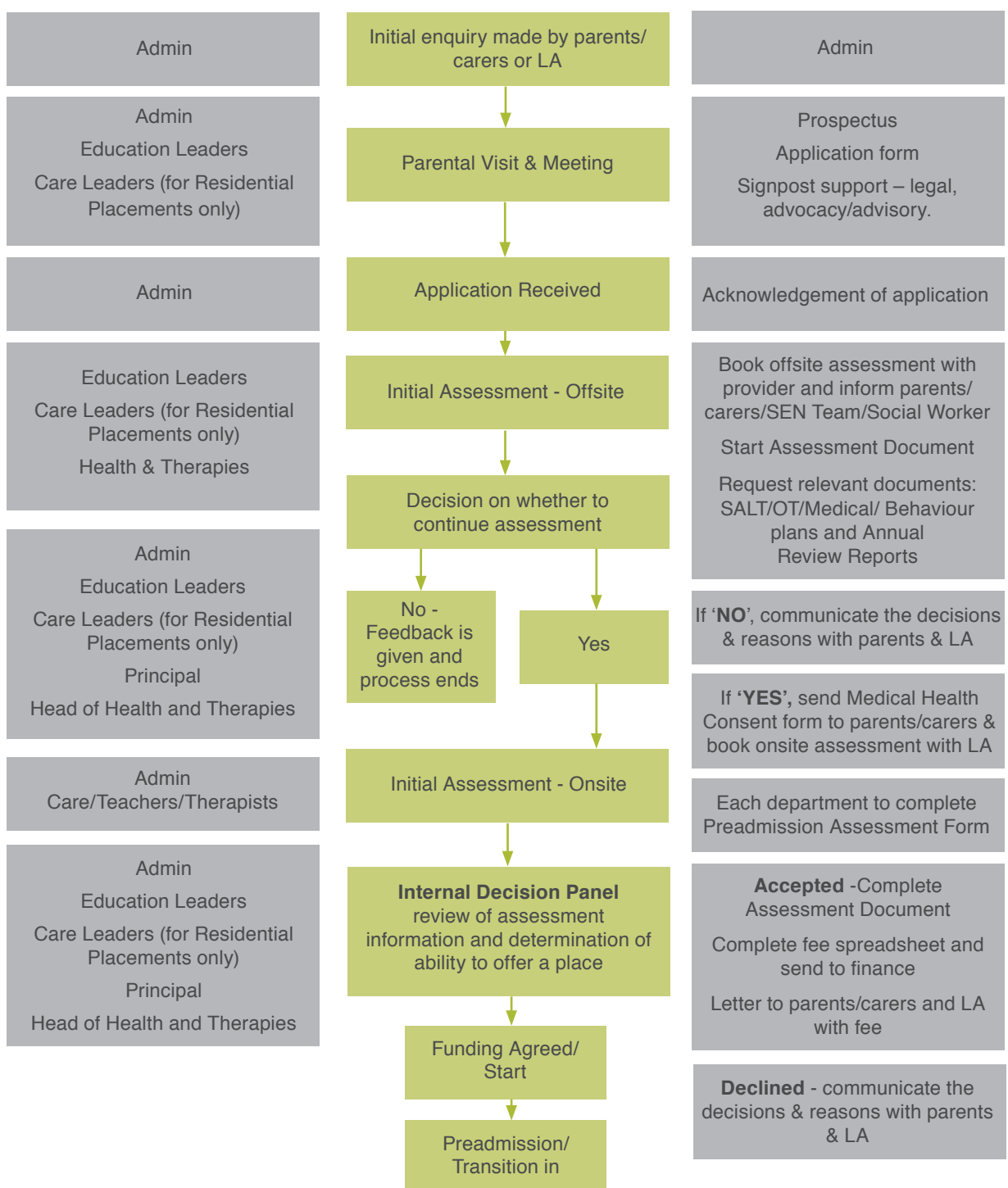
What's in this guide?	1
Our Mission	1
How do admissions and reviews work?	3
Is there the opportunity to trial the Sheiling before application?	5
Can the Sheiling support me if the LA declines my place?	5
Following confirmation of a place, what are the next steps?	5
Who will be my key contact at the Sheiling during the admissions process?	5
How does the review process work?	6
What does the 12-week assessment entail?	6
How do you share my child's progress?	6
What is house-life like?	8
Can we decorate our son's/daughter's bedroom at the Sheiling?	8
How do we stay in touch?	9
Are we able to visit and/or can our child come home on the weekends?	9
Are personal effects welcome?	9
Will my child need pocket money?	9
What clothes will my child need?	10
Will I be able to meet other children and parents?	10
What food will my son/daughter be offered?	11
Is there clear rhythm and routine?	11
How would you describe The Sheiling Ringwood community?	11
What is a typical school day like?	12
What are typical class groups like?	13
What is the provision for after-school and weekend activities?	13
How are arrivals and departures organised?	15
Do you offer parent events?	15
Do you have a parent support group?	15
What plans do you put in place to support parents during the holidays?	15
What therapies are available to school students?	16
What is the approach to online safety?	17
How will my child be kept safe?	18
What happens if a problem involving my child arises whilst at the Sheiling?	18
What is a positive approach to support?	19
Will my child's religion and culture be valued?	19
What medical care is available?	20
What is anthroposophical medicine?	20
Where are you located?	22
Places to stay near to school	22
Places to eat near to school	22
Attractions & places to visit nearby	23
Shopping, beaches and cinemas	24
A little further away.....	25
What should I do if I have a complaint or concern?	26
Useful points of contact and telephone numbers	27

# How do admissions and reviews work?

Full assessment of a prospective student's needs is made by senior staff and a personalised programme of transition developed. Students will make visits to the school to become familiar with the setting and staff and this will include an overnight stay for residential students.

After starting at the school, there is a further 12-week assessment period to ensure the right level of care and support is in place, after which a student's place can be confirmed.

As well as internal progress reviews throughout the year, each student's progress is reviewed annually. This is a formal process that takes place at the school and all parties that play a role in a student's education and care are invited to attend.





## Is there the opportunity for my child to trial the Sheiling before deciding to pursue the application process?

---

Please refer to our assessment process flow diagram which incorporates potential visits and overnight stays. Once we confirm that we are able to meet your child's needs, a transition plan will be designed specific to the individual student which may incorporate additional visits and stays.

## Can the Sheiling support me if the LA declines my place?

---

If we have confirmed that Sheiling School can meet your child's needs and have provided a formal offer letter but this is then declined by the Local Authority (LA), then the decision can be appealed. If your appeal goes to tribunal, it may be possible that a representative from the Sheiling can attend.

Please ensure that you liaise with us should this occur so that we can offer appropriate support. It is important to note that we can only represent Sheiling School, we cannot represent the parent.

## Following confirmation of a place, what are the next steps?

---

Transition planning will take place to prepare your child in a way that best suits them.

For residential students, the Health and Residential Teams will be in touch to ensure a smooth handover ahead of their start date. This will include setting up your son's/ daughter's bedroom, providing packing lists and registering with our local GP practice.

## Who would be my key contact at the Sheiling during the application process?

---

Your key contact will be Lauren Adam, our Admissions Coordinator:  
school.admissions@thesheilingringwood.co.uk  
Telephone: 01425 482406

## How does the review process work?

---

Annual Reviews are held once per year with the option to bring forward other types of reviews including Children Looked After Children (CLA), Personal Education Plan (PEP) and Transition. They are to review progress and the EHCP. This is a multi-disciplinary team (MDT) process with reports from teachers, therapists and house teams circulated up to 2 weeks prior to the date. Parents are also sent a template to complete ahead of the review to assist in capturing their thoughts.

## What does the first 12-week assessment entail?

---

Academic and therapeutic baseline assessments to build a plan with targeted outcomes. It will include a review of any medication, protocols, staffing ratios and needs that are unmet or unidentified. There will be a scheduled review at the end of the 12-week period to confirm the suitability of the placement.

## How do you share my child's progress?

---

There will be an Assessment Review held at the 12-week mark to confirm the placement and ensure assessments have been completed by therapists, teachers and, where relevant, care staff. Progress is shared at Annual Reviews; reports are circulated up to 2 weeks before the agreed date. Progress is shared within PEP meetings with the support of Individual Education Plans (IEPs). Teachers and care staff will also provide updates on a regular basis within the home-school book or via phone and email contact as agreed.



## What is life in a house like?

---

We have 2 home-from-home style houses. Each house is run like a family group under the guidance of the House Manager and a team of dedicated residential staff, giving each student a secure house base, a sense of belonging and a sense of responsibility.

Students have their own room and a team of Support Workers will care for the student's needs and will be supervised by the House Manager or deputy, who have overall responsibility for the student's care. All staff participate in our comprehensive induction and in-service training programmes.

The relationships our staff build with our students are crucial; we value the importance of our staff, their role and their understanding of our way of working and the values that are central to our provision.

Staff are crucial in making each house a home-from-home environment for our students.

Singing, music, games and craft play a central part in our social and cultural life, including off-site trips.

Watching television is kept to a minimum and used in a structured, educational or, occasionally, in a recreational way. Computers, iPads etc. are used where appropriate.

Our healthy meals, prepared where possible using local, organic produce and non-processed foods, are prepared and eaten in the individual houses as part of the house community. Students are encouraged to help with meal preparation at the weekends, where appropriate. Mealtimes are an important part of the day providing a strong sense of community for students and staff and an opportunity to develop independence skills.

Students from the Upper School who attend the Garden Workshop may also proudly share the fruit and vegetables grown as a result of their hard work, whilst others weigh and distribute food to their neighbouring houses onsite.

Learning life and personal skills is a key part of our waking day curriculum and everyone is expected to contribute what they can to the daily running of the house, including

## Can we decorate our son's/daughter's bedroom at the Sheiling?

---

Yes, we welcome items to personalise your son's/daughter's bedroom or personal space and this can include soft furnishings, toys and wall hangings. We involve the young person in choosing a colour theme for their room.

## How do we stay in touch?

---

When a young person is away from home, perhaps for the first time, communication with family, carers and friends is extremely important and helps to build upon their progress.

We encourage phone calls, video calls, letters or emails as ways of keeping in touch.

Our Residential Team will arrange this with you directly and it will be in the best way to suit you and your son/daughter. There are opportunities to phone, video call (Skype/Microsoft Teams), physical visits and weekly letters home. It is also possible to keep in regular contact with staff teams.

We have a child-centred approach agreed by parents, teachers and residential staff to ensure a healthy balance that works well with your child's learning and daily routine. When a child is residential, we often find a little time to settle in can be helpful.

Other family members are also able to contact your child with consent from primary carers in arrangement with senior staff.

## Are we able to visit our child at weekends and are they able to come home at weekends?

---

Yes, with prior arrangement and agreement with the house staff; this is simply to ensure that your child and the other students are prepared for this. They may come home at weekends in line with the contract between the school and LA.

## Will my child need pocket money?

---

To cover the student's personal expenditure for recreational and social activities and outings in general, residential staff will request pocket money as and when needed. This mainly applies to residential students.

## Are personal effects welcomed?

---

Students are free to bring their favourite books and belongings. They can even bring their own bicycle if they would like to.

Personal photographs are reassuring and can be displayed in albums or on noticeboards.

Violent games, toy guns and most electronic forms of entertainment are discouraged and are not in line with our therapeutic lifestyle.

## What clothes will my child need and when do I need to bring them home?

---

The Sheiling can provide packing lists for residential students. Where possible, we advise that your child keeps separate items at school and home to avoid items having to transition excessively. Medication, communication aids and items such as iPads may be the exception to this rule.

We do not have a formal dress code for either students or staff, although staff and students alike are expected to dress well and take care of their own appearance.

Although the houses do their own laundry, it is absolutely necessary that name labels be sewn into all your child's clothing, as we cannot be held responsible for items that are not labelled.

Please ensure clothes are clearly marked with name tapes (including socks and new items). We have found that sewn in name tapes stand the test of time.

Occasionally, it may be both appropriate and useful that a student buys an article of clothing themselves during term time but we will seek your consent and agreement to reimburse.

## Will I be able to meet the other children my child shares a house with?

---

We have community events including Sports Day, Christmas Crafts and a Summer Festival and these days are included in the term date information on our website. You would also meet other students informally when picking up/dropping off your child and they will be supported by staff at all times.

## Will I be able to meet the other children's parents who my child shares a house with?

---

As above, we have community events including Sports Day, Christmas Crafts and a Summer Festival and these days are included in the term date information on our website. You would also meet other students when picking up/dropping off your child and they will be supported by staff at all times. Our Parent Forum is another great way to connect and this group meets once a term with a member of the Senior Management Team plus 1-2 trustees. Parents also connect via the online platform of Discord. We can provide details of this, but it is a private group for Sheiling parents and carers.

## What food will my son/daughter be offered?

---

The Sheiling will provide hot lunches for all students. Parents do have the option to send or bring in food for their son/daughter. Students are encouraged to choose the menu each week. Staff will liaise with parents to ensure students always have suitable options provided. We will support diets which are due to health reasons or religious beliefs including gluten free, nut free and Halal. We also support the students to have a healthy balanced diet.

## Is there clear rhythm and routine?

---

Clear routines, celebrating the rhythm of the seasons, along with taking part in household practicalities, help our students make a meaningful contribution to the school community. A secure routine means students also know what to expect and this helps manage their anxieties.

Student house meetings allow students to share their views with regard to their day-to-day activities and the running of the house. Weekdays generally follow a regular routine,

while weekends are less structured and have more time for recreational activities, such as walks, cycle rides, outings to the beach or forest, concerts and music.

Incorporated into this pattern are festivals and major landmarks throughout the year such as Michaelmas, Diwali, Hanukkah, Christmas, Eid, Easter, Wesak, Midsummer and special days including, of course, individual birthdays!

## How would you describe the Sheiling community?

---

We benefit from a diverse community made up of students, staff, vocational workers and retired staff.

People in our community come from all over the world and we are very proud of the international atmosphere this creates and the wealth of experience, culture and diversity this brings.

All roles within our community are equally valued and combine to create our effective multidisciplinary and welcoming environment.

Our Senior Management Team and Focus Group oversee the day-to-day running of The Sheiling Ringwood. This group comprises staff who carry responsibility for management decisions and are accountable to our Board of Trustees. <https://www.thesheilingringwood.co.uk/page/?title=Trustees&pid=8>

Our community approach to life at the Sheiling is essential in providing a therapeutic and holistic placement.

## What is a typical school day like?

---

Our school hours are 9-4pm with a break at 12:30-2:30pm for lunch with a rest hour. Rest hour is additional time for enrichment including social and life-skills.

Lessons are led by the class teacher in blocks of 3-5 weeks. These are topic-based lessons, teaching core subjects of history, geography and the sciences.

Each main lesson is preceded by singing, poetry and topical discussions where attention is given to movement, communication and language skills.

Literacy and numeracy are woven into each lesson. Supported by class assistants, here the individual educational aims of each child are addressed. Work includes reading, writing and numeracy skills, guided by a teacher.

These lessons are mainly devoted to practical and artistic activities including physical education and games, swimming, woodwork, handcrafts, painting, Eurythmy, environmental studies and gardening.

Classrooms are situated apart from the houses and the students walk to the different buildings with their friends.

All students in the Upper School follow a broad-based, pre-vocational curriculum as described in our prospectus. The emphasis is on experiential and applied learning; lessons share their place on the timetable with outings, educational visits and project work.

By experiencing how the world works first-hand, students become more confident, finding their own place and their own way to contribute. The third year prepares students for moving on, finding out about themselves and their aspirations moving forward, increasing their choices and their ability to choose.

Students learn about the world of work and partake in regular work experience onsite and/or offsite depending on their ability.

Key Stage 4 and Upper School students work towards Accreditation Awards.

Examples of our school and college programmes can be found at:

<https://www.thesheilingringwood.co.uk/school-curriculum>

<https://www.thesheilingringwood.co.uk/college-curriculum>

Our website is also a good source of information, policies and useful links.  
[www.thesheilingringwood.co.uk](http://www.thesheilingringwood.co.uk)

## What are typical class groups - gender ratios, class sizes, levels?

---

There are currently 6 classes with a maximum of 7 students in each class. We have 2 residential classes and 4 day classes. We currently have 37 students of which 21 are boys and 16 are girls. All of our students are significantly below Age Related Expectations (ARE). The Upper School students study the Award Scheme Development and Accreditation Network (ASDAN); please see the school curriculum for more information. We do not currently have any students studying A-Levels.

### Ratios

The majority of our students are supported on a 1:1 basis. The teacher is supernumerary.

### EHCP

All students at the Sheiling are funded by LAs.

### Transport

We do not provide transport between the family home and the Sheiling. This is something that would need to be agreed between yourselves and the LA.

## What is the provision for after-school and weekend activities?

---

We have beautiful grounds of approximately 45 acres which students are encouraged to use extensively. Students have lots of opportunities to use the swings, trampolines, play trail and sensory garden. They also enjoy walks in the adjacent forest and using go-karts and bikes along with helping out in our organic garden. The swimming pool is also available to use at evenings and weekends.

Options to access the wider community include visits to National Trust properties, libraries, cafés, restaurants, gyms, swimming pools and zoos. We are situated close to beautiful woodland and forests, beaches and parks, all of which we visit regularly.

Students celebrate festivals such as Pancake Day and Carnival. They are supported to prepare for these festivals and join in various activities which include crafts, games and baking. Please refer to our Festival Guide. <https://www.thesheilingringwood.co.uk/page/?title=Festival+Guide&pid=68>



## How are arrivals and departures organised for residential students?

---

The beginning and end of half-terms are known as 'travel-days'. It is important that pick-up and drop-off times are confirmed with the relevant House Manager or Deputy House Manager.

Pick-up is usually before midday on the travel day and drop-off is after 2pm. Term dates can be found on The Sheiling Ringwood website along with a full calendar of events at [www.thesheilingringwood.co.uk](http://www.thesheilingringwood.co.uk)

## Do you offer parent events?

---

A calendar of dates for Parent Events can be found on our website and these dates are also scheduled into the live calendar on our website.

Parent Consultations take place twice-yearly and are arranged via the school office.

For residential students, we kindly ask that you contact the respective House Managers prior to arrival to advise on attendance.

## Do you have a parent support group?

---

Yes, we have a Parent Forum. You will be given details of how to get involved in your information pack. Parents also connect via the online platform of Discord. We can provide details of this, but it is a private group for Sheiling parents and carers.

## What plans do you put in place to support parents during the holiday periods?

---

Any interventions through Speech and Language Therapy (SALT), Occupational Therapy (OT) and Behaviour Support will be discussed along with the provision of resources to support continuity. We do not offer respite or holiday clubs during these periods and this would be a discussion between yourselves and your respective LA. We can support you to raise this topic during reviews.

# What therapies are available to school students?

---

As part of our offer, we provide inclusive access where assessed as appropriate to a wide range of therapies, including:

Speech and Language Therapy (SALT)

Occupational Therapy (OT)

Physiotherapy

Positive Behaviour Support

Music

These therapies are further complemented by Steiner-inspired therapies in the form of:

Eurythmy

Colour Light

Art

Massage

SALT, OT and Behaviour teams will assess all students and record a baseline. All students will have SALT, OT and Positive Behaviour Support Plans. Additional therapies are provided on a referral basis.



# What is the approach to online safety?

---

## Teaching

The school curriculum features the use of ICT and, as a result, takes online safety into account. Each student at the Sheiling will be taught online safety skills through a curriculum including formal lessons and individualised support based on their needs. Staff model appropriate use of ICT and all students take part in national online safety events.

## Filtering and Monitoring

Internet access is filtered with age restrictions to greatly reduce the chance of students viewing upsetting or inappropriate content. Students are effectively monitored in the classroom and in the house when they are accessing ICT. Staff are available to check appropriate student access and intervene, if required. Staff will promote appropriate use and inform parents/carers of any concerns.

## Safeguarding

Staff receive safeguarding training that covers aspects of online safety and appropriately-levelled guidance is displayed in each class. The Sheiling Ringwood has extensive monitoring procedures and protection to ensure the use of internet and emails is safe. In the case of an online safety incident, the appropriate external reporting will take place and the procedures in place are clear. The Sheiling Ringwood's use of ICT is covered in the Staff Code of Conduct and Acceptable Use of IT Policies.

## Access

We will work closely with parents to assess the requirements for any student to support them to access the best range of options for using technology. We will place restrictions on access only in the best interest of the student and to ensure their safety. We will follow the principles of liberty protection safeguards with an individualised approach to access such as supporting and monitoring use of social media

as part of the curriculum, if appropriate for the student.

## Cameras and privacy

Parents/carers are not required to comply with GDPR when taking photographs, for their own private use, of their children at an organised event, but we request that these images are not distributed or put online if they include other children/young people.

We must ensure we protect and safeguard all students and staff, including those who do not want to have their images stored online. We must always be mindful of the need to safeguard the welfare of young people because images may be used to harm children, for example, by displaying them inappropriately on the internet.

## Events

The Sheiling Ringwood will decide if the event is one at which photography and videoing will be permitted. If general photography is to take place - such as at our Summer Festival which is open to the public, for example - general consent is implied by attendance. No wider publication of photographs taken for personal/family use or photography is allowed in situations such as changing areas (e.g. Sports Day).

Every effort will be made by The Sheiling Ringwood to prevent capture of images of any student for whom consent has not been given when photography or filming is undertaken by The Sheiling Ringwood, or a professional employed by The Sheiling Ringwood.

Images captured by The Sheiling Ringwood are securely stored. We only publish with consent, e.g. on our website.

## How will my child be kept safe?

---

Safeguarding is central to everything we do as an organisation.

Our safeguarding culture stems from clear and effective governance and leadership and is achieved through extensive induction, ongoing training and supervision and monitoring arrangements relevant to our work with children and young adults.

All Trustees, staff and volunteers are trained in safeguarding and abuse prevention, recognition and reporting. This is further supported by a close relationship with our local safeguarding team.

A culture of openness and transparency ensures we are well-equipped to protect the vulnerable people in our care.

(for example, a student may on occasion pull another student's hair), The Sheiling Ringwood has a duty to inform the Social Worker and the Local Safeguarding Team if the students involved are over 18 years old.

This transparency towards other professionals is part of ensuring your child is safe and that, if an incident occurs, we will investigate and put actions in place to minimise the chances of this happening again. We will also inform you, as parents, and this contact will be made by either the Teacher, House Manager or any of the safeguarding deputies.

The Safeguarding and Safer Recruitment Policies can be found on our website: [www.thesheilingringwood.co.uk](http://www.thesheilingringwood.co.uk)

Certain key staff are trained to carry out specific duties with respect to safeguarding our students:

**Corine van Barneveld**

Principal, carries the role of Designated Safeguarding Lead

If an incident happens between students,

All of the following act as safeguarding deputies;

**Eszter Varadi**

(Deputy Head of Residential Services)

**Heidi Holm-Rasmussen**

(Head of Residential Services)

**Geoff Lively**

(Deputy Head of Sheiling College)

## What happens if a problem involving my child arises whilst at the Sheiling?

---

We use an approach which includes parents, teachers, therapists and carers to resolve any issues. We follow contact arrangements and all plans and interventions are mutually agreed.

The High Priority Group (HPG) - which is an internal multi-disciplinary team around the young person - may meet to discuss difficulties and to discuss approaches; feedback will be shared with parents, where appropriate.

## What is a positive approach to support?

---

We aim to support students who exhibit behaviours of concern through a range of positive approaches based on PROACT-SCIPr-UK® which is a training programme accredited by BILD.

All staff members receive induction and ongoing training in supporting students' behaviour. Specific training and coaching sessions may be offered to staff supporting students with more complex needs.

The school has a dedicated and experienced positive behaviour support team who monitor and analyse behavioural incidents and work closely with the multi-disciplinary team to develop and implement alternative strategies. Parents are encouraged to be part of this process.

The encouragement of self-management and tolerance of change and the development of independence skills are seen as crucial for our students. Staff have high expectations and seek to replace unwanted behaviours with appropriate ones through functional analysis and debriefing to determine why our students behave the way they do.

A structured and consistent environment, supported with visual cues such as timetables, work schedules and reward charts, helps our students to overcome anxiety with improved social behaviour as a result.

The Sheiling has comprehensive behaviour and bullying policies which are available on our website. [www.thesheilingringwood.co.uk](http://www.thesheilingringwood.co.uk)

## Will my child's religion and culture be valued?

---

Sheiling School is a non-denominational school; our ethos is derived from and inspired by, the work of Rudolf Steiner.

These principles shape our way of life, our respect for one another and our love of the natural world, festivals and seasons.

Verses are spoken daily, grace is said at mealtimes and morning and evening circles are moments of peace and reflection in what can be a busy day.

We endeavour to support the wishes of individual families; parents are welcome to discuss individual preferences with their House Manager.

## What medical care is available?

---

The health and wellbeing of students is of paramount importance. Our full-time, registered nurse supports students with a wide range of conditions and health needs. The nurse can provide emergency medical response and is responsible for the training of staff.

The nurse maintains close links with wider medical professionals involved in our students' care, including GPs and Consultants. We actively incorporate health promotion issues including continence assessment and management.

Each student's Health Care Plan is tailored to their requirements and specific conditions, such as epilepsy or diabetes, have an individual protocol to ensure student safety. Input from parents and carers is actively encouraged.

We are closely supported by Ringwood Medical Centre. Dr. Taylor is our main GP and looks after the students under his care.

## What is anthroposophical medicine?

---

With parents' consent, we can support students further with complementary medicines and therapies; anthroposophical medicines are designed to stimulate self-healing, encouraging the body to restore balance to bodily functions and strengthen the immune system.

An anthroposophical medical approach does not aim to replace conventional medicine. The approach makes use of plant, mineral and animal-based raw materials that scientific research has revealed to be of benefit.

Anthroposophical medicines supplement conventional medicine with an individualised and personalised set of holistic treatment options.

The anthroposophical doctor, Dr. Farah Hussain, has undertaken additional training in anthroposophical medicines and she holds a clinic at The Sheiling Ringwood six times a year.



Parents of our students have made recommendations of places to stay, eat and visit near to our school. These are based upon their own experiences.

## Where are you located?

---

Sheiling School is located in a beautiful, scenic area with many different places to visit and stay. The school is on the outskirts of the market town of Ringwood, Hampshire and only 4 miles outside of the New Forest National Park and 10 miles to the award-winning beaches along the South Coast. Detailed instructions on how to find us can be found at [www.thesheilingringwood.co.uk](http://www.thesheilingringwood.co.uk).

## Places to stay near school

---

There are hotels, bed & breakfasts and holiday parks in the local area and further afield.

**Ringwood** 2.5 miles

Premier Inn

[www.premierinn.com](http://www.premierinn.com)

**Fordingbridge** 8.5 miles

Sandy Balls Holiday Park

<https://www.awayresorts.co.uk/sandy-balls/>

B&Bs - <https://www.booking.com>

Camping - there are numerous camping sites in the local area.

<https://www.campsites.co.uk>

## Places to eat local to school

---

The Lantern Café is part of The Lantern Community and is adjacent to The Sheiling Ringwood.

<https://www.lanterncommunity.org.uk/>

[Ringwood Town Centre](#)

2 miles from The Sheiling Ringwood. There is a large public car park.

The Boston Tea Party

Framptons

Prezzo

The Fish Inn, Ringwood, 2 miles

St Leonard's Hotel, St Leonards, 2 miles

Elm Tree, Ringwood, 3 miles

Woodman, Ferndown, 3 miles

McDonald's, Ferndown, 2 miles

## Attractions and places to visit nearby

---

### **Moors Valley Country Park** 2.5 miles

[www.moors-valley.co.uk](http://www.moors-valley.co.uk)

Walks, cycle paths, play areas, play trail through the forest, tree top walk, Go Ape, golf, a narrow-gauge steam train, café, ranger dens and hawk walks.

### **Avon Heath Country Park** 2 miles

[www.dorsetcouncil.gov.uk/countryside-coast-parks/country-parks-and-visitor-centres/avon-heath-country-park/avon-heath-country-park.aspx](http://www.dorsetcouncil.gov.uk/countryside-coast-parks/country-parks-and-visitor-centres/avon-heath-country-park/avon-heath-country-park.aspx)

Walks, play area, café, wildlife and discovery areas and nature nursery. Popular with dog walkers.

### **New Forest Wildlife Park** 18 miles

<https://newforestwildlifepark.co.uk>

### **Liberty's Owl, Raptor and Reptile Centre** 3 miles

<https://libertysfalconry.com/>

### **The New Forest National Park** 4.5 miles

[www.thenewforest.co.uk/visitor-info](http://www.thenewforest.co.uk/visitor-info)

### **The New Forest Tour** 4 miles

[www.thenewforesttour.info](http://www.thenewforesttour.info)

Highly recommended open top bus, jump on and off all day (summer only).

### **New Forest Water Park** 5 miles

[www.newforestwaterpark.co.uk](http://www.newforestwaterpark.co.uk)

### **Bournemouth** 11 miles

[www.bournemouth.co.uk](http://www.bournemouth.co.uk)

Seafront - Pier, beach, amusements, Oceanarium, restaurants, walk through the gardens to shops, walk along the beach to Sandbanks and Boscombe beaches

[www.oceanarium.co.uk](http://www.oceanarium.co.uk)

### **Adventure Wonderland** 7.5 miles

[www.adventurewonderland.co.uk](http://www.adventurewonderland.co.uk)

Theme park based on Alice in Wonderland

### **Paultons Park Theme Park Home of Peppa Pig World** 17 miles

[www.paultonspark.co.uk](http://www.paultonspark.co.uk)

### **Poole** 15 miles

[www.pooletourism.com](http://www.pooletourism.com)

Beaches, Brownsea Island, Poole Quay, shopping centre. Poole Park is lovely to visit. Road to the beaches can get very busy during the summer.

---

**Tower Park** 10 miles

[www.towerparkentertainment.co.uk](http://www.towerparkentertainment.co.uk)

Entertainment complex - bowling, cinema, soft play, Splashdown (flumes), bingo and restaurants.

**Salisbury** 18 miles

[www.visitwiltshire.co.uk/salisbury](http://www.visitwiltshire.co.uk/salisbury)

### Swimming Pools

**Ringwood Health & Leisure Centre** 3 miles

<https://www.freedom-leisure.co.uk/centres/ringwood-health-and-leisure/>

Learners pool and main pool. Used by the school and has swimming lessons-check their website for public swimming sessions.

**Splashdown Tower Park** 10 miles

[www.splashdownwaterparks.co.uk/poole](http://www.splashdownwaterparks.co.uk/poole)

Flumes and slides, inside and outside. No main pool.

**Littledown** 7 miles

[www.bhliveactive.org.uk/swim/littledown](http://www.bhliveactive.org.uk/swim/littledown)

Large pool and smaller learner pool. One flume into separate pool.



## Shopping

---

The nearest supermarkets, both Sainsbury's and Waitrose, are in Ringwood. A larger Sainsbury's superstore, Lidl and Tesco are in Ferndown, 4 miles from The Sheiling Ringwood.

**Castlepoint Bournemouth** 7.5 miles

[www.castlepointshopping.com](http://www.castlepointshopping.com)

Variety of shops: M&S, Asda, Next, H&M, Gap, Boots, Sainsbury's.

**WestQuay Southampton** 23 miles

[www.west-quay.co.uk](http://www.west-quay.co.uk)

Large variety of shops: John Lewis, M&S, Next, H&M, Gap, Boots, Apple.

**Old George Mall, Salisbury** 18 miles

[www.oldgeorgemall.co.uk](http://www.oldgeorgemall.co.uk)

## Cinemas

---

**Cineworld Tower Park, Poole** 10 miles

[www.cineworld.co.uk/cinemas/poole](http://www.cineworld.co.uk/cinemas/poole)

**Odeon, Salisbury** 18 miles

[www.odeon.co.uk/cinemas/salisbury](http://www.odeon.co.uk/cinemas/salisbury)

**Odeon, Bournemouth** 11 miles

[www.odeon.co.uk/cinemas/bournemouth-bh2](http://www.odeon.co.uk/cinemas/bournemouth-bh2)

## Beaches

---

[www.thebeachguide.co.uk/south-west-england](http://www.thebeachguide.co.uk/south-west-england)

### Lepe Park

A stone beach, with views to the Isle of Wight, where you can spot tankers, cruise ships, Isle of Wight ferry and other boats as they go in and out of Southampton docks. D-Day historical site, information and memorial, play area, campsite, café.

### Southbourne Beach

As lovely as Bournemouth and Poole beaches but a lot less crowded! Park on Southbourne Overcliff Drive in the road for free or in the car parks along this road. The walk to the beach is not as long or as steep as the walks to the beaches closer to Bournemouth. Cafés, ice creams and toilets, use postcode BH6 3NJ. You can walk along the beach to Hengistbury Head.

### Lepe Park

28 miles

### Bournemouth

11 miles

### Boscombe

10 miles

### Sandbanks, Poole

15 miles

### Studland

16 miles

### Southbourne

10 miles

### Hengistbury Head

11 miles

## A little further away

---

**Longleat Safari Park** 39 miles

[www.longleat.co.uk](http://www.longleat.co.uk)

**Stonehenge** 28 miles

[www.english-heritage.org.uk/visit/places/stonehenge](http://www.english-heritage.org.uk/visit/places/stonehenge)

**Portsmouth** 43 miles

[www.historicdockyard.co.uk](http://www.historicdockyard.co.uk)

Home of the Mary Rose, HMS Victory & HMS Warrior

**Isle of Purbeck** 27 miles

[www.visit-dorset.com/explore/areas-to-visit/purbeck](http://www.visit-dorset.com/explore/areas-to-visit/purbeck)

**Weymouth** 39 miles

[www.visit-dorset.com/explore/areas-to-visit/weymouth](http://www.visit-dorset.com/explore/areas-to-visit/weymouth)

**Swanage** 30 miles

[www.swanage.gov.uk](http://www.swanage.gov.uk)

**Marwell Zoo** 29 miles

[www.marwell.org.uk/zoo](http://www.marwell.org.uk/zoo)

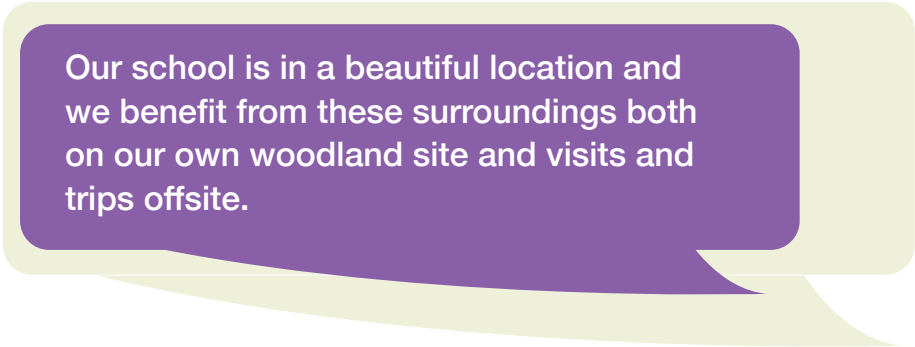
**Jurassic Coast** 30 miles

[www.jurassiccoast.org](http://www.jurassiccoast.org)

**Isle of Wight** 17 miles

[www.visitisleofwight.co.uk](http://www.visitisleofwight.co.uk)

17 miles is to Lymington Ferry Terminal (car & foot passengers)



Our school is in a beautiful location and we benefit from these surroundings both on our own woodland site and visits and trips offsite.

## What should I do if I have a complaint or concern?

---

We feel it is important to maintain open and clear lines of communication with parents and other stakeholders.

We encourage parents to let us know if they have any questions, worries or concerns.

Where parents feel that they have not been listened to or where they feel informal approaches have not been successful, it is possible to make a formal complaint.

Details of how to do this are contained in our Complaints Policy, available on our website.

Our website provides details of the number of complaints received during the most recent academic year via the Complaints Procedure.  
[www.thesheilingringwood.co.uk](http://www.thesheilingringwood.co.uk)

The contact details for serious student welfare issues are as follows:

**The Sheiling Ringwood's Designated Safeguarding Lead:**

Corine van Barneveld  
Principal  
Tel: 01425 482483

**Dorset Council**

**Children's Advice and Duty Service (ChAD)**  
Tel: 01305 228866



## Useful points of contact

---

### Board of Trustees

Jon Freeman - Chair  
Alice Copp  
David Lincoln  
Vanda North  
Elaine Peachey  
David Keeton  
Janet Kenward  
Julian Pyzer  
Rupert Blake  
Corine van Barneveld - Principal  
Sharon MacLennan - Clerk to the Trustees

### Focus Group

Tony Hatcher - Facilities Manager  
Eszter Varadi - Deputy Head of Residential Services  
Ben Allen - HR & Training Manager  
Hannah Jones - Deputy Head of College  
Sharon MacLennan - Executive Assistant to the Principal & Clerk to the Trustees  
Jonathan Tebbutt - Deputy Head of School  
Dan Rolles - Network Manager  
Eszter Varadi - Registered Manager -College Care

### Senior Management Team

Corine van Barneveld - Principal  
Katie Francis - Head of Health & Therapies  
Mike Gamble - Head of College  
Heidi Holm-Rasmussen- Head of Residential Services  
Katy Kerr - Head of Finance & Premises  
Andy Walters - Head of School

## Useful telephone numbers

---

### Houses

Feirefis House 01425 482410  
Reception 01425 477488

### School Admissions:

01425 482406

### Chair of the Board of Trustees:

Jon Freeman  
c/o Sharon MacLennan  
01425 477488

### Ringwood Medical Centre

The Close, Ringwood,  
Hampshire BH24 1JY 01425  
478901

### Nurse

Katie Francis 01425 482405

Useful policies, procedures and our latest Ofsted and CQC reports, together with further details regarding the information in this booklet, can be found on our website.

[www.thesheilingringwood.co.uk](http://www.thesheilingringwood.co.uk)



Horton Road, Ashley  
Ringwood, Hampshire  
BH24 2EB

Reception 01425 477488  
Admissions 01425 482406  
[school.admissions@thesheilingringwood.co.uk](mailto:school.admissions@thesheilingringwood.co.uk)

[www.thesheilingringwood.co.uk](http://www.thesheilingringwood.co.uk)



The Sheiling Special Education Trust  
is a non profit-making limited company registered  
in the UK (No. 08116370) and a registered  
charity (No. 1149264)