

REGISTER OF TRUSTEES SSET



JON FREEMAN (CHAIR)



SUMMARY

35 years in large corporations as an applications architect, IT director, programme manager, change manager and consultant. Subsequent expertise in values-based change, leadership coaching, training and spiritual intelligence systems. Author of books on the science of spirituality, human relationships with finance and conscious parenting. Based in Dorset and self-employed with a wide portfolio of activities. Managed Waldorf-based upper-school project and involved with the Sheiling since 2004.

AREAS OF ASSISTANCE

General organisational understanding. Support of values-based approaches (ethos). Commercial and business acumen.

WORKGROUP/COMMITTEE

Leadership - Performance Management Review. Finance Committee.

ALICE COPP



SUMMARY

I currently work as the Director of Quality, Teaching, Learning and Assessment at a large local further education college. I am the college's nominated strategic lead for Quality of Education and my role is to focus on continually developing the quality of the learning opportunities we offer for our large cohort of students. I have been working in the education sector for over 15 years, I have experience working in both academic and pastoral roles across a number of colleges, SEND education providers, alternative provisions and language academies, both in the UK and abroad. My passion is that every student that accesses any form of education is given the best possible opportunity to thrive and develop their knowledge, skills and behaviours.

AREAS OF ASSISTANCE

Quality Improvement, Staff Development, Teaching & Learning, EDI and SEND.

WORKGROUP/COMMITTEE

EDI Workgroup. Teaching & Learning Workgroup.

DAVID LINCOLN



SUMMARY

As Managing Director of a strengths-based psychometric development business, I am passionate about the principles of positive psychology and the impact that understanding the inner qualities that energise you can have on work and life. With a career in leadership roles, largely in large retail organisations, I have led teams to deliver exceptional results both in single units and across large geographic areas. I am driven by helping people be the best they can be and am a trained coach, have run leadership development programmes and encourage an authentic leadership approach.

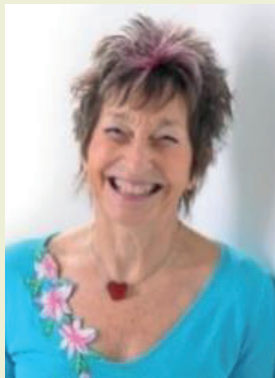
AREAS OF ASSISTANCE

New trustee – areas of focus to be confirmed.

WORKGROUP/COMMITTEE

New trustee – areas of focus to be confirmed.

VANDA NORTH



SUMMARY

My passion is to share practical skills and mind sets to allow people to have joy in their lives, so they may be their best possible selves. To this end, I have 50 years of experience in creating, training and encouraging, wellbeing and learning HOW to learn strategies. I have authored 8 books on the brain, learning, resilience and joy strategies - now in 8 languages. I am the Past-President of the International Society for Accelerated Learning & Teaching. Also, I have initiated and run a large school volunteer program and a global learning company, creating models which may be replicated.

AREAS OF ASSISTANCE

Parent Link. PPR. Wellbeing. Learn to Learn processes.

WORKGROUP/COMMITTEE

Leadership - Performance Management Review. Parent Forum Workgroup.

DAVID KEETON



SUMMARY

I have worked in Residential Special Education for 39 years, of which 25 years have been in Leadership and Management as a Deputy Head Teacher. Throughout this time, I also acted as Head Teacher, steering my school through some significant change and development. I have extensive knowledge and experience of Quality Education and, in particular, Teaching, Learning and Assessment, education regulations and supporting SEND students with a wide range of learning needs, including autism. Although now retired from education, I continue to enjoy supporting the school and students through my Trustee role at the Sheiling, ensuring that the young people have the best educational opportunity.

AREAS OF ASSISTANCE

SEND Education, Leadership & School Improvement. Teaching, Learning & Assessment. Teachers' Performance Management. Independent School Regulations & Standards.

WORKGROUP/COMMITTEE

Teaching & Learning Workgroup.

JOAN DAMPNEY



SUMMARY

After training as a Froebel teacher, I taught at two junior schools. In 1972, I volunteered at Portfield School for autistic children, becoming full-time Deputy Head within two terms, until leaving in 1980. By this time, we had accepted weekly boarders and numbers had significantly increased. In 1980, I went to The Fortune Centre of Riding Therapy where I devised and implemented the 3-year curriculum based on horse knowledge for post-16 students with SEND. After retiring in 1990, I continued as an advisor. In the early 90s, I became Chair of Governors at Portfield School until 2002 when I became a Trustee of the Wessex Autistic Society. Upon retiring, I was asked to be President of the school - to which I agreed.

AREAS OF ASSISTANCE

SEN Education leadership and improvement. Riding therapy. Residential schools.

WORKGROUP/COMMITTEE

Parent Forum Workgroup.

JULIAN PYZER



SUMMARY

Degree in biochemistry. 21 years in Steiner-based care, training and education organisations; 6 in Camphill (3 of those at The Sheiling Ringwood/Sturts Farm) and 15 at the innovative Ruskin Mill College. Experience ranges from working as a new co-worker to being Registered Manager and part of a Senior Management Team. 20 years working in bio-dynamic farming and gardening, often in conjunction with care work.

AREAS OF ASSISTANCE

Integrating conventional and Steiner-based approaches. Care and education management. Environmental & land use issues. Facilitation and supervision skills. Proof reading and copy editing.

WORKGROUP/COMMITTEE

Safeguarding Committee. EDI Workgroup. Link trustee for residential care.

JANET KENWARD



SUMMARY

After teaching in FE and adult education, I coordinated Maths and Numeracy programmes for adults in a London Borough and managed an Adult Education centre before being appointed as Principal/CEO of a residential Independent Specialist College, which I did for over 17 years. During this time, I was a member of the Natspec Board of Directors (Association of National Specialist Colleges) for 5 years. For the last 7 years, I have worked in SENDIASS providing support and advice on educational issues for families of children and young people with additional needs. I feel very strongly that children and young people have a right to an education which is appropriate to their needs, supports them to engage in and enjoy learning and work towards achieving their ambitions. I have been a Trustee at the Sheiling since 2017.

AREAS OF ASSISTANCE

Specialist Further Education Colleges. Education leadership. EHCP process.

WORKGROUP/COMMITTEE

Safeguarding Committee. Teaching & Learning Workgroup.