

A Guide for Parents

Information and frequently asked questions about joining our college



Updated June 2023



What's in this guide?

This guide is an introduction into how we care for and educate our students. We hope you find it a useful guide. Here you will find some essential information and answers to frequently asked questions relating to your young person's placement at Sheiling College.

If you have any further questions or require clarification of any kind, please do not hesitate to contact **Reception** on 01425 477488 so we can put you in contact with the right person. You can also find out more at www.thesheilingringwood.co.uk

Our Mission

To create an educational, therapeutic community and environment, which upholds each person's human integrity and spiritual wholeness and where every child and young person, both because of and despite their individual challenges, has something to give and something to learn through all of their relationships with others.

Contents

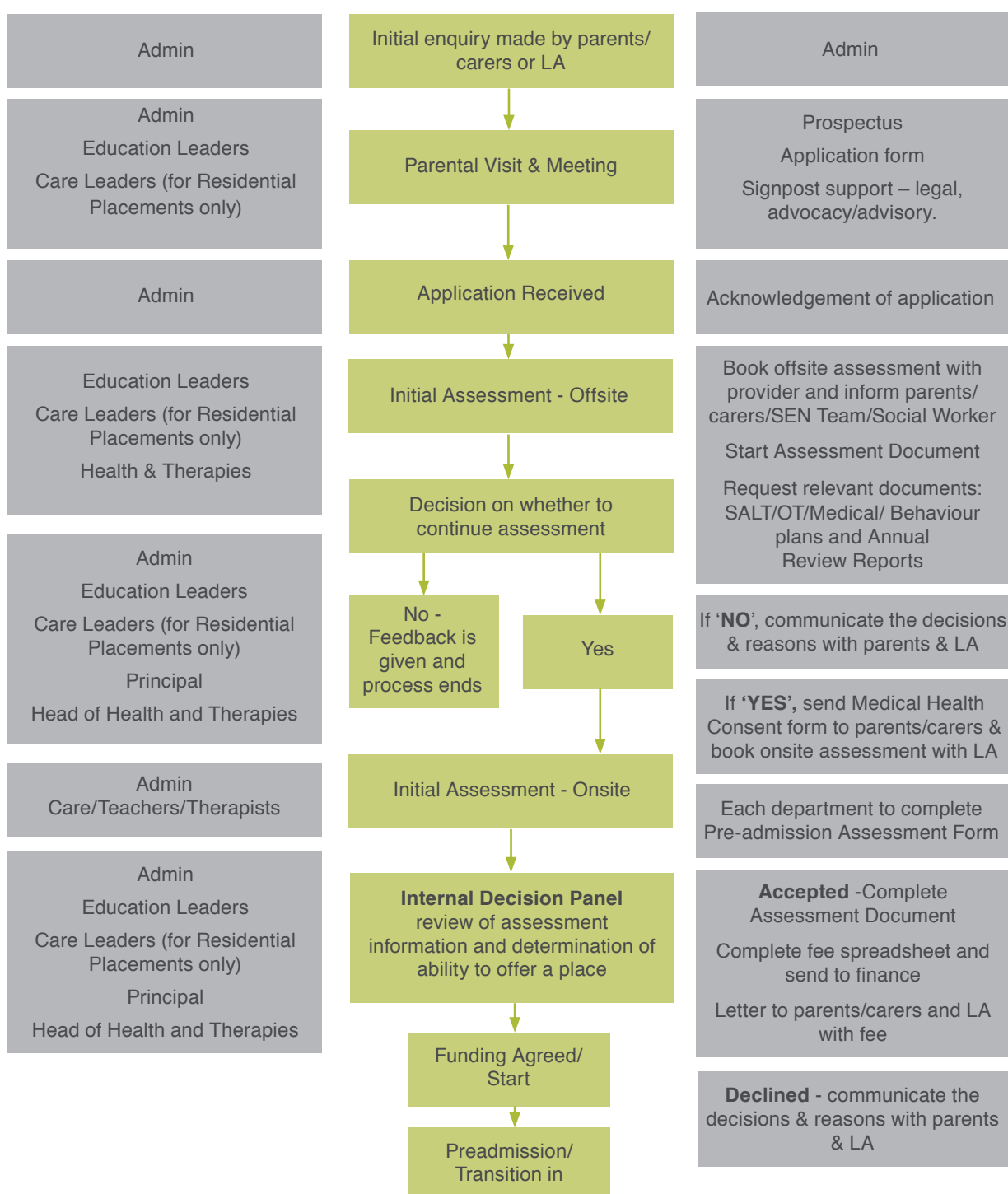
What's in this guide?	1
Our Mission	1
How do admissions and reviews work?	3
Is there the opportunity to trial the Sheiling before application?	5
Can the Sheiling support me if the LA declines my place?	5
Following confirmation of a place, what are the next steps?	5
Who will be my key contact at the Sheiling during the admissions process?	5
How does the review process work?	6
What does the 12-week assessment entail?	6
How do you share my son's/daughter's progress?	6
What is house-life like?	8
Can we decorate our son's/daughter's bedroom at the Sheiling?	8
How do we stay in touch?	9
Are we able to visit and/or can our young person come home on the weekends?	9
Are personal effects welcome?	9
Will my son/daughter need a personal allowance?	9
What clothes will my young person need?	10
Will I be able to meet other young people and parents?	10
What food will my son/daughter be offered?	11
Is there clear rhythm and routine?	11
How would you describe the Sheiling community?	11
What is a typical college day like?	12
What are typical class groups like?	13
What is the provision for after-college and weekend activities?	13
How are arrivals and departures organised?	15
Do you offer parent events?	15
Do you have a parent support group?	15
What plans do you put in place to support parents during the holidays?	15
What therapies are available to college students?	16
What is the approach to online safety?	17
How will my son/daughter be kept safe?	18
What happens if a problem involving my son/daughter arises?	18
What is a positive approach to support?	19
Will my son's/daughter's religion and culture be valued?	19
What medical care is available?	20
What is anthroposophical medicine?	20
Where are you located?	22
Places to stay near to college	22
Places to eat near to college	22
Attractions & places to visit nearby	23
Shopping, beaches and cinemas	25
A little further away.....	26
What should I do if I have a complaint or concern?	27
Useful points of contact and telephone numbers	28

How do admissions and reviews work?

Full assessment of a prospective student's needs is made by senior staff and a personalised programme of transition developed. Students will make visits to the college to become familiar with the setting and staff and this will include an overnight stay for residential students.

After starting at the college, there is a further 12-week assessment period to ensure the right level of care and support is in place, after which a student's place can be confirmed.

As well as internal progress reviews throughout the year, each student's progress is reviewed annually. This is a formal process that takes place at the school and all parties that play a role in a student's education and care are invited to attend.





Is there the opportunity for my son/daughter to trial the college before deciding to pursue the application process?

We ask that if you would like to pursue a placement with us that you submit an application form. Once the assessment process begins, your son/daughter will be invited to spend a day at the college, inclusive of an overnight visit for residential students. If, at any point, you decide that Sheiling College is no longer your preferred option for a placement, you may withdraw your application.

Can the Sheiling support me if the LA declines my place?

Each application is carefully considered by the Local Authority (LA) on an individual basis but we will be on hand to offer advice and guidance during your application process and will signpost you to relevant services who can provide independent legal SEND advice, if required.

If your appeal goes to tribunal, it may be possible that a representative from the Sheiling can attend. Please ensure that you liaise with us should this occur so that we can offer appropriate support. It is important to note that we can only represent Sheiling College, we cannot represent the parent.

Following confirmation of a place, what are the next steps?

You and your LA representative will be sent a letter to confirm that your son/daughter has been offered a place. You will also receive a proposal outlining how Sheiling College intends to meet their needs, wishes, outcomes and provision within their EHCP.

It is important to note that offers are sent out subject to funding being agreed; we therefore encourage you to keep in regular contact with your SEND Officer and Social Worker to secure the placement before the space is filled.

Who would be my key contact at the Sheiling during the application process?

Your key contact will be our Transitions and Referrals Officer, Kirsty Brown. Kirsty will take the lead on the application and assessment process and chair regular referral meetings with the Referrals Team at Sheiling College: college.admissions@thesheilingringwood.co.uk
Telephone: 01425 482498

How does the review process work?

Annual Reviews are held once per year with the option to bring forward other types of reviews including Transition. They are to review progress and the EHCP. This is a multi-disciplinary team (MDT) process with reports from teachers, therapists and house teams circulated up to 2 weeks prior to the date. Parents are also sent a template to complete ahead of the review to assist in capturing their thoughts.

What does the first 12-week assessment entail?

Your son/daughter will be welcomed to college and allocated a class group and residential house. There will be an internal contract review carried out 6 weeks into the placement to review their initial progress, suitable support levels and any outstanding therapy needs. At the 12-week point, a First Term Review will be arranged where any concerns and/or celebrations can be discussed between families, staff and LAs. If there are any concerns that the placement is unsuitable, it will be discussed within this meeting.

How do you share my son's/daughter's progress?

Through daily/weekly communication between parents and Residential Managers and teachers, weekly letters home including pictures and, of course, in Annual Reviews and other meetings.



What is life in a house like?

We have 3 home-from-home style houses. Each house is run like a family group under the guidance of the House Manager and a team of dedicated residential staff, providing each student with a secure house base, a sense of belonging and a sense of responsibility.

Students have their own room and a team of Support Workers will care for the student's needs and will be supervised by the House Manager or deputy, who have overall responsibility for the student's care. All staff participate in our comprehensive induction and in-service training programmes.

The relationships our staff build with our students are crucial; we value the importance of our staff, their role and their understanding of our way of working and the values that are central to our provision.

Staff are crucial in making each house a home-from-home environment for our students.

Singing, music, games and craft activities play a central part in our social and cultural life, including off-site trips.

Watching television is kept to a minimum and used in a structured, educational or, occasionally, in a recreational way. Computers, iPads etc. are used where appropriate.

Our healthy meals, prepared where possible using local, organic produce and non-processed foods, are cooked and eaten in the individual houses as part of the house community. Students are encouraged to help with meal preparation at the weekends, where appropriate. Mealtimes are an important part of the day providing a strong sense of community for students and staff and an opportunity to develop independence skills.

Students who attend the Garden Workshop may also proudly share the fruit and vegetables grown as a result of their hard work, whilst others weigh and distribute food to their neighbouring houses.

Everyone is expected to contribute what they can to the daily running of the house, including household tasks.

Can we decorate our son's/daughter's bedroom at the Sheiling?

Yes, we welcome items to personalise your son's/daughter's bedroom or personal space and this can include soft furnishings, wall hangings and other personal choice items. We involve the young person in choosing a colour theme for their room.

How do we stay in touch?

Prior to your son/daughter moving into one of our residential houses, the House Manager will be in touch with you to answer any questions regarding contact.

The best method of contact and its frequency will be discussed and agreed ahead of time. For some young people, it can be using the landline in their residential house, their own mobile phone, the residential team's iPad or laptop or, alternatively, the student's own device for Skype or video calls.

As with visits during term time, this can be something new for a young person and for some it can be hard to relate to seeing or hearing family members via a phone or a screen. Therefore, we will always support the young person to develop this gradually as with any other life skill.

Are we able to visit our son/daughter at weekends/are they able to come home at weekends?

Families and relatives are welcome to visit their young person in their residential house at any time during term-time, including joining them for lunch or a festival onsite.

As each young person is very different, we will plan this on an individual basis as - for some young people - it can be confusing to have parents visit them in the residential house and they may prefer to go offsite.

Sometimes, it can be upsetting for other students and for others it is something they enjoy and an important part of their learning and becoming an adult.

Will my young person need a personal allowance?

To cover the student's personal expenditure for recreational and social activities and outings in general, residential staff will request a personal allowance as and when needed. This mainly applies to residential students.

Are personal effects welcomed?

Students are free to bring their favourite books and belongings. They can even bring their own bicycle if they would like to.

Personal photographs are reassuring and can be displayed in albums or on noticeboards.

Violent games, toy guns and most electronic forms of entertainment are discouraged and are not in line with our therapeutic lifestyle.

What clothes will my son/daughter need and when do I need to bring them home?

A clothing list is provided as part of the admissions package provided to all new students. Your son's/daughter's clothes can stay here for the term, if not needed at home during holidays. At times during the term, we may ask for all clothing to go home to allow parents to check if any clothes need to be replaced or new sizes provided.

We do not have a formal dress code for either students or staff, although staff and students alike are expected to dress well and take care of their own appearance.

Although the houses do their own laundry, it is absolutely necessary that name labels be sewn into all your son's/daughter's clothing, as we cannot be held responsible for items that are not labelled.

Please ensure clothes are clearly marked with name tapes (including socks and new items). We have found that sewn-in name tapes stand the test of time.

Occasionally, it may be both appropriate and useful that a student buys an article of clothing themselves during term time, but we will seek your consent and agreement to reimburse.

Will I be able to meet the other young people my son/daughter shares a house with?

Families and relatives are welcome to come and visit their son/daughter in their residential house at any time during term time, including joining them for lunch or festivals onsite. As each young person has different needs, we plan these visits on an individual basis as, for some students, it can be confusing and they can prefer to go offsite; sometimes it can be upsetting for other students whilst, for others, it is something they enjoy and an important part of their learning and becoming an adult.

Will I be able to meet the other students' parents who my son/daughter shares a house with?

Families and relatives are welcome as above. We also hold a number of community events where parents are able to join their son/daughter. Our Parent Forum is another great way to connect with other parents and this group meets once a term with a member of the Senior Management Team plus 1-2 trustees. Parents also connect via the online platform of Discord. We can provide details of this, but it is a private group for Sheling parents and carers.

What food will my son/daughter be offered?

The Sheiling will provide lunches for all students. Parents do have the option to send or bring in food for their son/daughter. Students are encouraged to choose the menu each week. Staff will liaise with parents to ensure students always have suitable options provided. We will support diets which are due to health reasons or religious beliefs including gluten free, nut free and Halal. We also support the students to have a healthy balanced diet.

Is there clear rhythm and routine?

Clear routines, celebrating the rhythm of the seasons, along with taking part in household practicalities, help our students make a meaningful contribution to the college community. A secure routine means students also know what to expect and this helps manage their anxieties.

Student house meetings allow students to share their views with regard to their day-to-day activities and the running of the house. Weekdays generally follow a regular routine,

while weekends are less structured and have more time for recreational activities, such as walks, cycle rides, outings to the beach or forest, concerts and music.

Incorporated into this pattern are festivals and major landmarks throughout the year such as Michaelmas, Diwali, Hanukkah, Christmas, Eid, Easter, Wesak, Midsummer and special days including, of course, individual birthdays!

How would you describe the Sheiling community?

We benefit from a diverse community made up of students, staff, vocational workers and retired staff.

People in our community come from all over the world and we are very proud of the international atmosphere this creates and the wealth of experience, culture and diversity this brings.

All roles within our community are equally valued and combine to create our effective multidisciplinary and welcoming environment.

Our Senior Management Team and Focus Group oversee the day-to-day running of The Sheiling Ringwood. This group comprises staff who carry responsibility for management decisions and are accountable to our Board of Trustees.

<https://www.thesheilingringwood.co.uk/trustees>

Our community approach to life at the Sheiling is essential in providing a therapeutic and holistic placement.

What is a typical college day like?

Our college day starts at 9am and finishes at 4.30pm. There is a break between 12.30-2.30pm for lunch, for students to participate in independent living skills and also allows the students time for relaxing and socialising with others.

The days are separated into two halves with lessons incorporated within both the morning and afternoon sessions. Sessions are run by supernumerary teachers and the weekly timetable will involve a range of lessons such as horticulture, PSHE, vocational skills, leisure and community trips and many more.

Many of the learning opportunities within a college day take place outside of the classroom.

Each student will be placed on an accredited course and will have a bespoke study programme which enables students to progress and achieve success in life skills, personal development and social independence.

Within each day at college, opportunities for communication & interaction, functional skills, vocational & work, community integration & relationships, health & well-being and independent living skills are embedded.

Examples of our college and school programmes can be found at

<https://www.thesheilingringwood.co.uk/college-curriculum>

<https://www.thesheilingringwood.co.uk/school-curriculum>

Monday	Tuesday	Wednesday	Thursday	Friday
ICT	Leisure&Community	Study skills	Yoga	Art
Snack	Snack	Snack	Snack	Snack
English	Leisure&Community	Horticulture	Swimming	Art
Lunch	Lunch	Lunch	Lunch	Lunch
Horticulture	PSHE	Vocational Skills	Retail Skills	Cooking
Horticulture	Maths	Vocational Skills	REtail Skills	Cooking

An example of a weekly timetable.

Our website is also a a good source of information, policies and useful links.
www.thesheilingringwood.co.uk

What are typical class groups - gender ratios, class sizes, levels?

There are currently 7 classes with between 5-6 students in each class. Students are placed in classes based on peer compatibility and social communication needs. We currently have 38 students of which 29 are male and 9 are female. All of our students have an EHCP and have a moderate to severe learning disability. The accreditation our students achieve is either Entry 1, Entry 2 or Entry 3.

Ratios

The majority of our students are supported on a 1:1 basis, however the level of support is dependent on the individual and this will be decided throughout the assessment process. At times, ratios may increase or decrease if there are changes to the student's needs. Each class teacher is supernumerary.

EHCP

All students at Sheiling College are funded by LAs.

Transport

We do not provide transport between the family home and Sheiling College. This is something that needs to be arranged between yourselves and the LA.

What is the provision for after-college and weekend activities?

We have beautiful grounds of approximately 45 acres which students are encouraged to use extensively. Students have lots of opportunities to use the leisure equipment, trails, trampolines and sensory garden. They also enjoy walks in the adjacent forest and using go-karts and bikes along with helping out in our organic garden onsite. The swimming pool is also available to use at evenings and weekends.

Options to access the wider community including visits to National Trust properties, libraries, cafés, restaurants, gyms, swimming pools and zoos. We are situated close to beautiful woodland and forests, beaches and parks, all of which we visit regularly.

Students celebrate festivals such as Pancake Day and Carnival. They are supported to prepare for these festivals and join in various activities which include crafts, games and baking. Please refer to our Festival Guide for more information.

<https://www.thesheilingringwood.co.uk/page/?title=Festival+Guide&pid=68>



How are arrivals and departures organised for residential students?

The beginning and end of half-terms are known as 'travel-days'. It is important that pick-up and drop-off times are confirmed with the relevant House Manager or Deputy House Manager.

Pick-up is usually before midday on the travel day and drop-off is after 2pm. Term dates can be found on The Sheiling Ringwood website along with a full calendar of events at www.thesheilingringwood.co.uk

Do you offer parent events?

A calendar of dates for Parent Events can be found on our website and these dates are also scheduled into the live calendar on our website.

Parent Consultations take place twice-yearly and are arranged via the college office.

For residential students, we kindly ask that you contact the respective House Managers prior to arrival to advise on attendance.

Do you have a parent support group?

Yes, we have a Parent Forum. You will be given details of how to get involved in your information pack. Parents also connect via the online platform of Discord. We can provide details of this, but it is a private group for Sheiling parents and carers.

What plans do you put in place to support parents during the holiday periods?

The contact and communication between your family and residential team will be ongoing and this includes sharing areas of new development and skills, but also current challenges. If parents would like to replicate any of the college structure or strategies at home, or vice-versa, the residential team will share the details and support the young person in potentially transferring some of these to their family home. These could include self-care skills, sleeping routines, domestic interests, communication or just being social with their family at home. It is important that your son/daughter can enjoy a relaxing time with their family during the holidays.

What therapies are available to college students?

As part of our offer, we provide inclusive access where assessed as appropriate to a wide range of therapies, including:

Speech and Language Therapy (SALT)

Occupational Therapy (OT)

Physiotherapy

Positive Behaviour Support

Music

These therapies are further complemented by Steiner-inspired therapies in the form of:

Eurythmy

Colour Light

Art

Massage

SALT, OT and Behaviour teams will assess all students and record a baseline. All students will have SALT, OT and Positive Behaviour Support Plans. Additional therapies are provided on a referral basis.



What is the approach to online safety?

Teaching

The college curriculum extensively features the use of ICT and, as a result, takes online safety into account. Each student at the Sheiling will be taught online safety skills through a curriculum including formal lessons and individualised support based on their needs. Staff model appropriate use of ICT and all students take part in national online safety events.

Filtering and Monitoring

General internet access is filtered with low age restrictions to greatly reduce the chance of students viewing upsetting or inappropriate content. Students are effectively monitored in the classroom and (when appropriate) in the house when they are accessing ICT. Staff are available to check appropriate student access and intervene, if required. Staff will promote appropriate use and be transparent regarding any concerns. This will often involve discussing and agreeing on the best way of supporting and addressing concerns with the student's circle of support – parents, carers and professionals.

Safeguarding

Staff receive safeguarding training that covers aspects of online safety and appropriately-levelled guidance on online safety is displayed in each class. The Sheiling Ringwood has extensive monitoring procedures and protection to ensure the use of internet and emails are safe. In the case of an online safety incident, the appropriate external reporting will take place and the procedures are clear. The Sheiling Ringwood's use of ICT is covered in the Staff Code of Conduct and Acceptable Use of IT Policies.

Access

We will work closely to assess the requirements for any student to support them to access the best range of options for using technology. We will place restrictions on access only in the best interest of the student and to ensure

their safety. We will follow liberty protection safeguards with an individualised approach to access such as supporting monitored use of social media as part of the curriculum, if appropriate for the student.

Cameras and privacy

Parents/carers are not required to comply with GDPR when taking photographs, for their own private use, of their son/daughter at an organised event, but we request that these images are not distributed or put online if they include other children/young people.

We must ensure we protect and safeguard all students and staff, including those who do not want to have their images stored online. However, we must always be mindful of the need to safeguard the welfare of young people because images may be used to harm children/young people, for example, by displaying them inappropriately on the internet.

Events

The Sheiling Ringwood will decide if the event is one at which photography and videoing will be permitted. If general photography is to take place - such as at our Summer Festival which is open to the public, for example - general consent is implied by attendance. No wider publication of photographs taken for personal/family use or photography is allowed in situations such as changing areas (e.g. Sports Day).

Every effort will be made by The Sheiling Ringwood to prevent capture of images of any student for whom consent has not been given when photography or filming is undertaken by The Sheiling Ringwood, or a professional employed by The Sheiling Ringwood.

Images captured by The Sheiling Ringwood are securely stored. We only publish with consent, e.g. on our website.

How will my son/daughter be kept safe?

Safeguarding is central to everything we do as an organisation.

Our safeguarding culture stems from clear and effective governance and leadership and is achieved through extensive induction, ongoing training and supervision and monitoring arrangements relevant to our work with children and young adults.

All Trustees, staff and volunteers are trained in safeguarding and abuse prevention, recognition and reporting. This is further supported by a close relationship with our local safeguarding team.

A culture of openness and transparency ensures we are well-equipped to protect the vulnerable people in our care.

If an incident happens between students, the Sheiling has a duty to inform the Social Worker and the Local Safeguarding Team if the students involved are over 18 years old.

This transparency towards other professionals is part of ensuring your son/daughter is safe and, that if an incident occurs, we will investigate and put actions in place to minimise the chances of this happening again. We will also inform you, as parents, and this contact will be made by either the Teacher, House Manager or any of the safeguarding deputies.

The Safeguarding and Safer Recruitment Policies can be found on our website:
www.thesheilingringwood.co.uk

Certain key staff are trained to carry out specific duties with respect to safeguarding our students:

Corine van Barneveld
Principal, carries the role of
Designated Safeguarding Lead

All of the following act as safeguarding deputies;

Eszter Varadi
(Deputy Head of Residential Services)

Heidi Holm-Rasmussen
(Head of Residential Services)

Geoff Lively
(Deputy Head of Sheiling College)

What happens if a problem involving my son/daughter arises whilst at the Sheiling?

One of the aspects we value here at the Sheiling is to be transparent and honest with parents regarding when things are going well, but also if any challenges occur. We would never conceal any information from parents regarding their son/daughter, including a young person going through a difficult time or struggling with something.

The relationship with parents is key for us to ensure we support each student to the highest standard, but we also acknowledge that parents tend to know their son/daughter best and we can learn from parents and their experiences with their young person.

What is a positive approach to support?

We aim to support students who exhibit behaviours of concern through a range of positive approaches based on PROACT-SCIPr-UK® which is a training programme accredited by BILD.

All staff members receive induction and ongoing training in supporting students' behaviour. Specific training and coaching sessions may be offered to staff supporting students with more complex needs.

The college has a dedicated and experienced positive behaviour support team who monitor and analyse behavioural incidents and work closely with the multi-disciplinary team to develop and implement alternative strategies. Parents are encouraged to be part of this process.

The encouragement of self-management and tolerance of change and the development of independence skills are seen as crucial for our students. Staff have high expectations and seek to replace unwanted behaviours with appropriate ones through functional analysis and debriefing to determine why our students behave the way they do.

A structured and consistent environment, supported with visual cues such as timetables, work schedules and reward charts, helps our students to overcome anxiety with improved social behaviour as a result.

The Sheiling has comprehensive behaviour and bullying policies which are available on our website. www.thesheilingringwood.co.uk

Will my son's/daughter's religion and culture be valued?

Sheiling College is a non-denominational college; our ethos is derived from, and inspired by, the work of Rudolf Steiner.

These principles shape our way of life, our respect for one another and our love of the natural world, festivals and seasons.

Verses are spoken daily, grace is said at mealtimes and morning and evening circles are moments of peace and reflection in what can be a busy day.

We endeavour to support the wishes of individual families; parents are welcome to discuss individual preferences with their House Manager.

What medical care is available?

The health and wellbeing of students is of paramount importance. Our full-time registered nurse supports students with a wide range of conditions and health needs. The nurse can provide emergency medical response and is responsible for the training of staff.

The nurse maintains close links with wider medical professionals involved in our students' care, including GPs and Consultants. We actively incorporate health promotion issues including continence assessment and management.

Each student's Health Care Plan is tailored to their requirements and specific conditions, such as epilepsy or diabetes, have an individual protocol to ensure student safety. Input from parents and carers is actively encouraged.

We are closely supported by Ringwood Medical Centre. Dr. Taylor is our main GP and looks after the students under his care.


What is anthroposophical medicine?

With parents' consent, we can support students further with complementary medicines and therapies; anthroposophical medicines are designed to stimulate self-healing, encouraging the body to restore balance to bodily functions and strengthen the immune system.

An anthroposophical medical approach does not aim to replace conventional medicine. The approach makes use of plant, mineral and animal-based raw materials that scientific research has revealed to be of benefit.

Anthroposophical medicines supplement conventional medicine with an individualised and personalised set of holistic treatment options.

The anthroposophical doctor, Dr. Farah Hussain, has undertaken additional training in anthroposophical medicines and she holds a clinic at The Sheiling Ringwood six times a year.

A scenic view of a beach at sunset. In the foreground, an open oyster shell lies on the wet sand, with gentle waves washing over it. The middle ground shows the ocean with white-capped waves breaking. In the background, a large pier with a building and a lighthouse-like structure extends into the sea. The sky is filled with soft, white clouds, and the sun is low on the horizon, casting a warm glow.

Parents of our students have made recommendations of places to stay, eat and visit near to our college. These are based upon their own experiences.

Where are you located?

Sheiling College is located in a beautiful, scenic area with many different places to visit and stay. The college is on the outskirts of the market town of Ringwood, Hampshire and only 4 miles outside of the New Forest National Park and 10 miles to the award-winning beaches along the South Coast. Detailed instructions on how to find us can be found at www.thesheilingringwood.co.uk.

Places to stay near college

There are hotels, bed & breakfasts and holiday parks in the local area and further afield.

Ringwood 2.5 miles

Premier Inn

www.premierinn.com

Fordingbridge 8.5 miles

Sandy Balls Holiday Park

<https://www.awayresorts.co.uk/sandy-balls/>

B&Bs - <https://www.booking.com>

Camping - there are numerous camping sites in the local area.

<https://www.campsites.co.uk>

Places to eat local to college

The Lantern Café is part of The Lantern Community and is adjacent to The Sheiling Ringwood.

<https://www.lanterncommunity.org.uk/>

Ringwood Town Centre

2 miles from The Sheiling Ringwood. There is a large public car park.

The Boston Tea Party

Framptons

Prezzo

The Fish Inn, Ringwood, 2 miles

St Leonard's Hotel, St Leonards, 2 miles

Elm Tree, Ringwood, 3 miles

Woodman, Ferndown, 3 miles

McDonald's, Ferndown, 2 miles

Attractions and places to visit nearby

Moors Valley Country Park 2.5 miles

www.moors-valley.co.uk

Walks, cycle paths, play areas, play trail through the forest, tree top walk, Go Ape, golf, a narrow-gauge steam train, café, ranger dens and hawk walks.

Avon Heath Country Park 2 miles

www.dorsetcouncil.gov.uk/countryside-coast-parks/country-parks-and-visitor-centres/avon-heath-country-park/avon-heath-country-park.aspx

Walks, play area, café, wildlife and discovery areas and nature nursery. Popular with dog walkers.

New Forest Wildlife Park 18 miles

<https://newforestwildlifepark.co.uk>

Liberty's Owl, Raptor and Reptile Centre 3 miles

<https://libertysfalconry.com/>

The New Forest National Park 4.5 miles

www.thenewforest.co.uk/visitor-info

The New Forest Tour 4 miles

www.thenewforesttour.info

Highly recommended open top bus, jump on and off all day (summer only).

New Forest Water Park 5 miles

www.newforestwaterpark.co.uk

Bournemouth 11 miles

www.bournemouth.co.uk

Seafront - Pier, beach, amusements, Oceanarium, restaurants, walk through the gardens to shops, walk along the beach to Sandbanks and Boscombe beaches

www.oceanarium.co.uk

Adventure Wonderland 7.5 miles

www.adventurewonderland.co.uk

Theme park based on Alice in Wonderland

Paultons Park Theme Park Home of Peppa Pig World 17 miles

www.paultonspark.co.uk

Poole 15 miles

www.pooletourism.com

Beaches, Brownsea Island, Poole Quay, shopping centre. Poole Park is lovely to visit. Road to the beaches can get very busy during the summer.

Tower Park 10 miles

www.towerparkentertainment.co.uk

Entertainment complex - bowling, cinema, soft play, Splashdown (flumes), bingo and restaurants.

Salisbury 18 miles

www.visitwiltshire.co.uk/salisbury

Swimming Pools

Ringwood Health & Leisure Centre 3 miles

<https://www.freedom-leisure.co.uk/centres/ringwood-health-and-leisure/>

Learners pool and main pool. Used by the school and has swimming lessons-check their website for public swimming sessions.

Splashdown Tower Park 10 miles

www.splashdownwaterparks.co.uk/poole

Flumes and slides, inside and outside. No main pool.

Littledown 7 miles

www.bhliveactive.org.uk/swim/littledown

Large pool and smaller learner pool. One flume into separate pool.



Shopping

The nearest supermarkets, both Sainsbury's and Waitrose, are in Ringwood. A larger Sainsbury's superstore and Tesco are in Ferndown, 4 miles from The Sheiling Ringwood.

Castlepoint Bournemouth 7.5 miles

www.castlepointshopping.com

Variety of shops: M&S, Asda, Next, H&M, Gap, Boots, Sainsbury's.

WestQuay Southampton 23 miles

www.west-quay.co.uk

Large variety of shops: John Lewis, M&S, Next, H&M, Gap, Boots, Apple.

Old George Mall, Salisbury 18 miles

www.oldgeorgemall.co.uk

Cinemas

Cineworld Tower Park, Poole 10 miles

www.cineworld.co.uk/cinemas/poole

Odeon, Salisbury 18 miles

www.odeon.co.uk/cinemas/salisbury

Odeon, Bournemouth 11 miles

www.odeon.co.uk/cinemas/bournemouth-bh2

Beaches

www.thebeachguide.co.uk/south-west-england

Lepe Park

A stone beach, with views to the Isle of Wight, where you can spot tankers, cruise ships, Isle of Wight ferry and other boats as they go in and out of Southampton docks. D-Day historical site, information and memorial, play area, campsite, café.

Southbourne Beach

As lovely as Bournemouth and Poole beaches but a lot less crowded! Park on Southbourne Overcliff Drive in the road for free or in the car parks along this road. The walk to the beach is not as long or as steep as the walks to the beaches closer to Bournemouth. Cafés, ice creams and toilets, use postcode BH6 3NJ. You can walk along the beach to Hengistbury Head.

Lepe Park

28 miles

Bournemouth

11 miles

Boscombe

10 miles

Sandbanks, Poole

15 miles

Studland

16 miles

Southbourne

10 miles

Hengistbury Head

11 miles

A little further away

Longleat Safari Park 39 miles

www.longleat.co.uk

Stonehenge 28 miles

www.english-heritage.org.uk/visit/places/stonehenge

Portsmouth 43 miles

www.historicdockyard.co.uk

Home of the Mary Rose, HMS Victory & HMS Warrior

Isle of Purbeck 27 miles

www.visit-dorset.com/explore/areas-to-visit/purbeck

Weymouth 39 miles

www.visit-dorset.com/explore/areas-to-visit/weymouth

Swanage 30 miles

www.swanage.gov.uk

Marwell Zoo 29 miles

www.marwell.org.uk/zoo

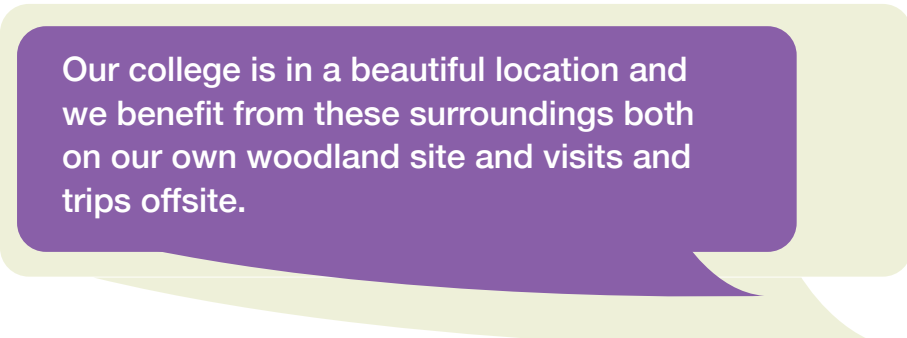
Jurassic Coast 30 miles

www.jurassiccoast.org

Isle of Wight 17 miles

www.visitisleofwight.co.uk

17 miles is to Lymington Ferry Terminal (car & foot passengers)



Our college is in a beautiful location and we benefit from these surroundings both on our own woodland site and visits and trips offsite.

What should I do if I have a complaint or concern?

We feel it is important to maintain open and clear lines of communication with parents and other stakeholders.

We encourage parents to let us know if they have any questions, worries or concerns.

Where parents feel that they have not been listened to or where they feel informal approaches have not been successful, it is possible to make a formal complaint.

Details of how to do this are contained in our Complaints Policy, available on our website.

Our website provides details of the number of complaints received during the most recent academic year via the Complaints Procedure.

www.thesheilingringwood.co.uk

The contact details for serious student welfare issues are as follows:

The Sheiling Ringwood's Designated Safeguarding Lead:

Corine van Barneveld
Principal
Tel: 01425 482483

**Or Dorset Social Services:
Adult Safeguarding Triage Team**

01929 557712
Out of Hours – 01202 657279



Useful points of contact

Board of Trustees

Jeremy Morris - Chair
Alice Copp
Joan Dampney
Jon Freeman
Neil Johnson
David Keeton
Janet Kenward
Julian Pyzer
Maggi Rigg
Corine van Barneveld - Principal
Sharon MacLennan - Clerk to the Trustees

Focus Group

Tony Hatcher - Facilities Manager
Eszter Varadi - Deputy Head of Residential Services
Ben Allen - HR & Training Manager
Geoff Lively - Deputy Head of College
Sharon MacLennan - Executive Assistant to the Principal & Clerk to the Trustees
Jonathan Tebbutt - Deputy Head of School
Dan Rolles - Network Manager
Eszter Varadi - Registered Manager - College Care

Senior Management Team

Corine van Barneveld - Principal
Katie Francis - Head of Health & Therapies
Mike Gamble - Head of College
Heidi Holm Rasmussen - Head of Residential Services
Katy Kerr - Head of Finance & Premises
Andy Walters - Head of School

Useful telephone numbers

Houses

Westmount House 01425 482421
Watchmoor House 01425 482442
Sheiling House 01425 482418
Reception 01425 477488

College Admissions:

Kirtsy Brown 01425 482498

Chair of the Board of Trustees:

Jeremy Morris
c/o Sharon MacLennan
01425 477488

Ringwood Medical Centre

The Close, Ringwood,
Hampshire BH24 1JY
01425 478901

Nurse

Katie Francis 01425 482405

Useful policies, procedures and our latest Ofsted and CQC reports, together with further details regarding the information in this booklet, can be found on our website.

www.thesheilingringwood.co.uk



Horton Road, Ashley
Ringwood, Hampshire
BH24 2EB

Reception 01425 477488
Admissions 01425 482498
college.admissions@thesheilingringwood.co.uk

www.thesheilingringwood.co.uk



The Sheiling Special Education Trust
is a non profit-making limited company registered
in the UK (No. 08116370) and a registered
charity (No. 1149264)